



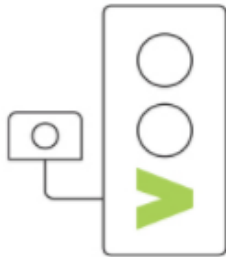
**VERRA
MOBILITY**

Investor Presentation

June 2019

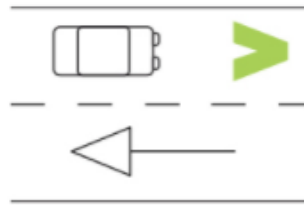
SAFE. SMART. CONNECTED.

Verra Mobility is a leader in global mobility, helping the world move more safely and easily



Building safer cities

by installing leading technology that supports driver behavior change to help make the roads safer



Enabling smarter roadways

by helping commercial fleets manage the complexity of tolls, violations and vehicle registrations



Developing more connected systems

by seamlessly connecting people, technology and data across the smart transportation ecosystem

**As Mobility Becomes More Complex, Connected and Automated,
Verra Mobility Works Behind the Scenes to Help Make Transportation Safer and Easier**

Verra Mobility at a Glance

A Global Leader in Smart Transportation Solutions that Seamlessly Connect
People, Technology and Data Across the Smart Mobility Ecosystem

Leading

provider of tech-enabled smart
transportation solutions for
tolling and safety automations

\$389M

2018 Adj. Pro Forma Revenue

\$219M

2018 Adj. Pro Forma EBITDA⁽¹⁾

4,500+

speed, red-light and school
bus stop arm safety cameras
installed

200 million+

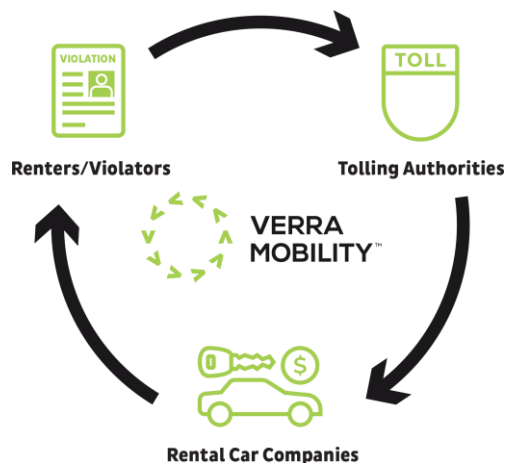
toll transactions processed
in 2018

8.5 million

violations processed on behalf
of photo enforcement clients
annually

We Operate in Two Business Segments

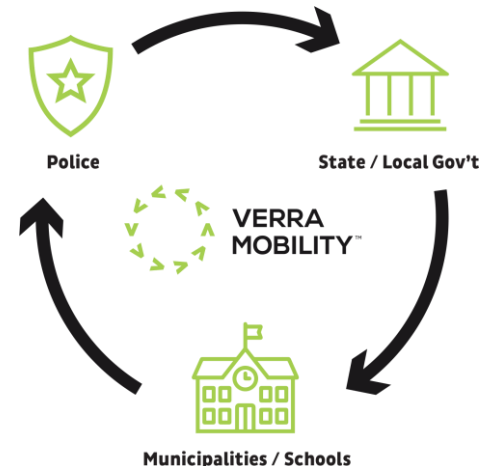
Commercial Services



- What we do
 - The Commercial Services segment generates revenue by providing fully outsourced tolling and violations management and title and registration services to our customers through integrated technologies that both reduce cost and add value
- Who we serve
 - Rental Car Companies (RACs)
 - Fleet Management Companies (FMCs)
 - Large Fleet Customers

\$241M
2018 Service Revenue⁽¹⁾

Government Solutions



- What we do
 - The Government Solutions segment generates revenue by managing the technology platform needed to capture and process images or videos of vehicles committing traffic violations, and providing related installation, maintenance and administrative services
- Who we serve
 - Municipalities
 - Counties
 - School districts
 - Other governmental entities

\$143M
2018 Service Revenue⁽²⁾



Basis of Presentation: Verra Mobility made two acquisitions early in 2018; the data presented has been adjusted as if the acquisitions were included in the results for all periods. The unadjusted and adjusted pro forma results of operations are included in the appendix to this presentation. All pro forma adjustments are in the commercial services segment.

- (1) FY18 adj. pro forma revenue
- (2) FY18 revenue includes \$17.2M in ancillary and other revenue

An aerial, black and white photograph of New York City, specifically the Lower Manhattan area. The Manhattan Bridge is prominent, spanning the East River. In the foreground, a tall, rectangular skyscraper with a grid-like facade stands out. The city's dense urban landscape, with numerous buildings and streets, is visible in the background.

Thank You

Verra Mobility

<http://ir.verramobility.com/>